



TWO RIVERS PUBLIC CHARTER SCHOOL

# **SCHOOL YEAR 21-22 RECOVERY FRAMEWORK**

**UPDATED JUNE 2021**

# TABLE OF CONTENTS

<b>BACKGROUND</b>	<b>1</b>
<b>RECOVERY FRAMEWORK</b>	<b>3</b>
<b>RE-ENTRY</b>	<b>4</b>
<b>RE-ENGAGE</b>	<b>5</b>
<b>RE-EMPOWER</b>	<b>6</b>
<b>RE-CHALLENGE</b>	<b>7</b>
<b>CAMPUS SPECIFIC PAGES</b>	
<b>4TH STREET</b>	<b>8</b>
<b>YOUNG</b>	<b>10</b>
<b>MIDDLE SCHOOL</b>	<b>12</b>
<b>SPECIAL EDUCATION</b>	<b>13</b>
<b>SPECIALS</b>	<b>14</b>
<b>EXTRACURRICULARS &amp; AFTERCARE</b>	<b>14</b>
<b>REMOTE LEARNING</b>	<b>15</b>



Spring 2021 8th Grade Showcase Product: Jacinda

*“IN FALL 2021, TWO RIVERS WILL RETURN FULLY TO IN-PERSON LEARNING FIVE DAYS PER WEEK.*

*Never has the Two Rivers’ educational model been more relevant than it is today as we begin to emerge from this pandemic: project-based learning that measures success through high-quality work, character, and mastery of knowledge and skills for all students.”*

*- DR. KRISTINA, EXECUTIVE DIRECTOR*

## BACKGROUND

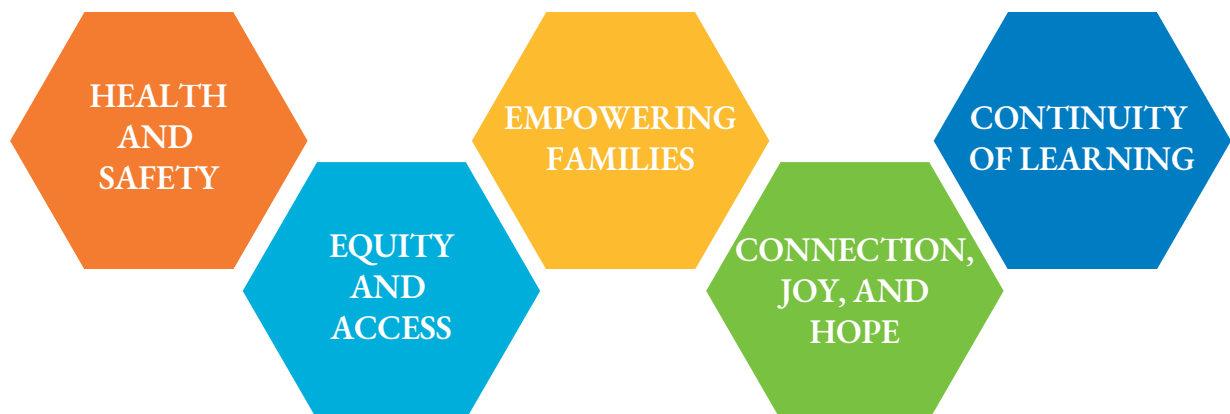
### PRIOR TO THE PANDEMIC,

Two Rivers was focused on three things:

1. Hiring a new Executive Director to sustain and grow Two Rivers’ success,
2. Completing construction of a new middle school building at the Young Campus, and
3. Executing our model with fidelity in order to eliminate persistent inequities.

On Friday, March 13, Two Rivers schools had their last “normal” day. For the remainder of the school year, the Two Rivers community went into overdrive to ensure stability and continued learning for our students: distributing emergency funds and groceries, securing internet connectivity and devices, and iterating on models of synchronous and asynchronous learning.

We were guided by our mission and what would crystallize as our pandemic learning design principles:



## AS THE CORONAVIRUS PANDEMIC CONTINUED,

the centuries' old pandemic of racism garnered international attention with the murder of George Floyd on May 25, 2020. In the days that followed, Two Rivers committed itself to become an antiracist organization - a commitment that drew on and fortified work in race, equity, and inclusion from 2015 that included students, staff, and families.

### 2015-2016

Launch and expansion of Race and Equity Book Club.

First cohort of Share Your DC.

### 2017

Race and Equity Task Force created.

### 2018-2019

Year-long instructional staff professional development program established.

PCSB awards Best Program Innovation to Share Your DC.

### 2020

Two Rivers commits to becoming an anti-racist organization.

Race and Equity Crews launched network-wide.

### 2021

Two Rivers publishes Equity Vision Statement.

## BY FALL OF 2020,

in response to the rising public health crisis caused by COVID-19, Two Rivers determined that the 2020-2021 school year would be grounded in a **virtual option** for all of our students. Engaging in effective remote instruction was identified as the **safest and least disruptive option** for our entire school community.

Members of the Two Rivers community experienced the pandemic differently. Some lost loved ones and many felt their physical and mental wellbeing suffer. Despite the challenges, Two Rivers saw students meet or exceed their **growth goals**, excel in their **Scholarly Habits**, and create **high-quality work**.

By the 4th quarter, a majority of students' benefited from an array of in-person activities: **onsite instruction, crew connection opportunities, and support services**, with particular priority placed on students who showed signs of struggle academically or socially while remote.



### IN THE SUMMER OF 2021,

Two Rivers will triple its summer program, serving almost 300 students through a **five-week summer school program** spanning all grades. The program will provide in-person learning and structured enrichment, including daily academic instruction provided by Two Rivers staff, and activities that will support social-emotional growth. Students with extended school year (ESY) services on their individualized education plan (IEP) may attend in person or remotely.

## SCHOOL YEAR 2021-22

### IN THE FALL OF 2021,

Two Rivers will return fully to in-person learning five days per week. We re-commit to our model as we live our mission: *to nurture a diverse group of students to become lifelong, active participants in their own education, develop a sense of self and community, and become responsible and compassionate members of society.* Based on the feedback of our families and the experiences of our staff with remote and in-person learning this year, we have built a strong framework for our recovery.

## TWO RIVERS RECOVERY FRAMEWORK

### RE-ENTRY

Accommodating all students in-person, all day, five days per week.

### RE-ENGAGE

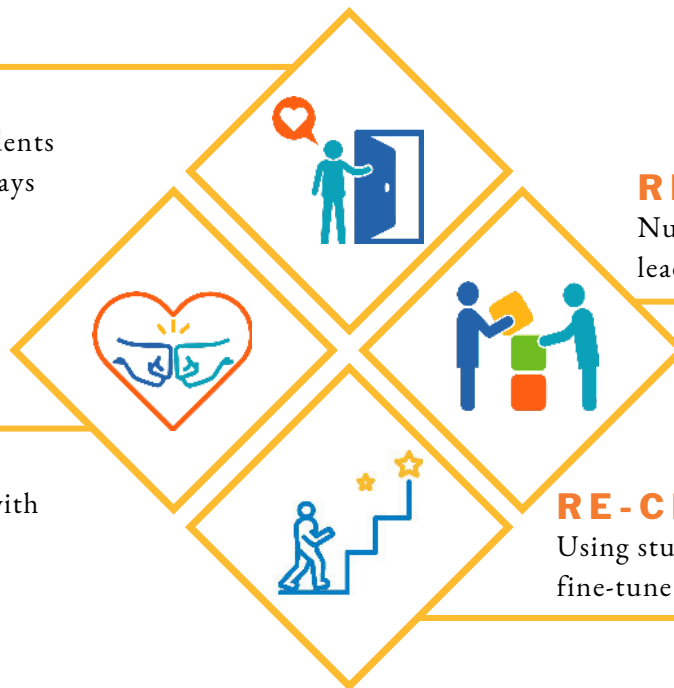
Building strong bonds with crew and families.

### RE-EMPOWER

Nurturing students to be leaders of their own learning.

### RE-CHALLENGE

Using student data to continuously fine-tune instruction.





## RE-ENTRY

Two Rivers is prepared to serve **100% of students in-person in Fall 2021, while maintaining remote options** for students who cannot attend in person for medically certified reasons or because of required quarantine or illness. We have invested heavily in safe facilities and have learned from our pilot programs how to function in our schools safely together.



### What does safe re-entry look like?

#### Facilities

- Investments to improve air quality
  - Bipolar ionization air filtration systems installed in each building
  - Filters upgraded to MERV-13 across all air filtration units
- Health suites and COVID-19 isolation spaces at each campus
- Touchless faucets, toilet flushes, water fountains, and soap dispensers installed

#### Cleaning/Disinfecting

- All spaces in use are cleaned and disinfected nightly by the evening custodial crew and disinfected using the Clorox Total 360 Electrostatic System in the event of any illness reported onsite.
- Additional cleaning staff hired to increase cleaning of high-touch surfaces throughout the day.

#### Social Distancing & Mask Wearing

- Distance between students of at least 3 feet; classrooms are arranged and marked in ways that support and remind students of distancing.
- Following all local requirements on mask wearing for both students and adults.
- Clear masks will be provided for students and staff engaged in activities where observing mouth movement may be critical, such as speech therapy.

#### Supplies and Materials

- Two Rivers will minimize the sharing of materials and use sanitizing practices where resources are shared.

#### Vaccination

- Strongly encouraged for all students and staff eligible (anyone age 12 and up), but not required
- Visit [vaccinate.dc.gov](https://vaccinate.dc.gov) for more information to help stop the spread of the virus and end the pandemic



#### Personnel

- COVID Monitors: This temporary new role at each school will support daily COVID screening and proper mask wearing until habits are built by all staff and students.
- Administrative Support: New administrative assistants at each site to facilitate families' support school leadership and increase operational efficiency.
- At-home health screener for all staff and students through ParentSquare for easy arrival into buildings.

#### COVID-19 Testing

- Symptomatic: Testing available and protocols in place in case symptoms develop while onsite.
- Asymptomatic: Weekly PCR swab testing by school nurse of a random sample of 10% of students (parental consent required). Results shared with the families only.

**More information can be found in Two Rivers' health and safety guidance: [A Crew Approach to Health & Safety.](#)**

Two Rivers *strongly encourages* everyone eligible to get vaccinated.  
For more information, visit [vaccinate.dc.gov](https://vaccinate.dc.gov)

## RE-ENGAGE

Recognizing that students will experience our buildings and our community differently after a year apart, Two Rivers will focus on **re-establishing connections** between our students, our staff, and spaces.



### What does joyful re-engagement look like?

#### First Six Weeks of School

- Per the practices in Responsive Classroom, Two Rivers uses the first six weeks of school to reset classroom and school norms and set the structures for an effective community of learning. The school will focus time and attention on building crew, social and emotional well-being, and school culture at the beginning of the 2021-22 School Year as it has every year.

#### Family Engagement

- ParentSquare: This all-in-one platform has an array of features to streamline communications to and from Two Rivers
  - Smartphone app or web portal access
  - Built-in translation
  - Source for all for newsletters from Dr. Kristina, principals, and teachers (including the Trib)
  - Two-way communication with teachers
  - Time-sensitive alerts sent as text messages or phone calls
  - COVID-19 health screener

#### Fully redesigned website

- Among the many updates, our new website will include a re-entry page for the SY21-22 transition, new school-specific pages with their own calendars and news updates, and an easily accessible staff directory.

#### Student & Family Empowerment Coordinator

- This new role will support tracking and responding to family needs network-wide.

*ParentSquare* will be a new platform to *streamline and enhance communications* between the school and families.



## RE-EMPOWER

To re-empower our students to lead their learning, Two Rivers will strengthen our system of tiered support for students and families. This year it is particularly important that all students have the **social-emotional, mental, and behavioral health tools** to succeed in setting and meeting ambitious goals for their learning and growth.



### What does re-empowering students look like?

#### Three Dimensions of Student Success

- As an EL Education school, Two Rivers defines student success as Mastery of Skills and Knowledge, Character, and High Quality Work. Our foundation for re-empowering students is in providing the tools and structures for students to re-engage across all of these dimensions.

#### Crew

- Every student will be assigned a crew of 16 to 25 students with a teacher as crew leader who knows those students well. Crew acts as a place for students to have personal support and an advocate in their academic and social emotional learning.

#### Goal Setting

- With their crew leader, every student will participate in goal setting meetings every two weeks to make progress across all three dimensions of student success.

#### Standard-Based Grading

- To aid in their goal setting, Two Rivers utilizes standards-based grading rather than omnibus grades for an entire course. This finer detail allows students and families to have a greater understanding of their particular areas of strength and areas for growth.

#### Learning Expeditions

- One of the core components of our curriculum are Learning Expeditions, which are roughly 10-week, hands-on integrated projects. These projects are anchored in problem statements that give purpose to student learning. Expeditions engage, empower, and challenge students in producing meaningful, high-quality work.



#### Universal Mental Health and Well-Being Screening

- All students will be assessed to identify students in need of additional supports and to identify areas of widespread need for school-wide strategies.

#### Added Counseling Capacity

- All schools will have access to a new Academic School Counselor who ensures students build academic and social-emotional competencies, along with life and social skills.

#### New Assistant Principals of Culture at Elementary Schools

- Following in the middle school's footsteps, both elementary schools will add an additional assistant principal role focused on establishing a positive, values-driven culture through crew and coaching staff around student behavior.



*Every student* will participate in *goal setting meetings* every two weeks with their crew leader.

## RE-CHALLENGE

Two Rivers will use assessment data to provide strong instruction to accelerate learning.



### What does re-challenging students look like?

#### Data-Driven Academic Support

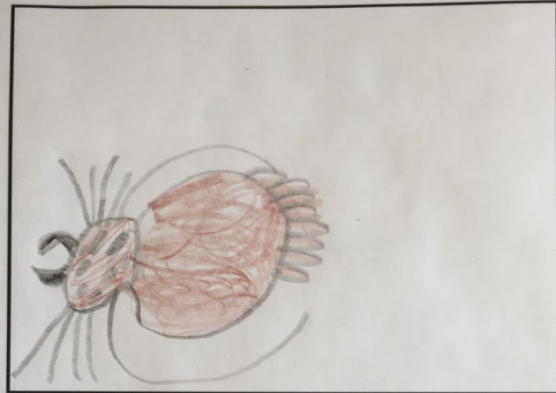
- Placing a stronger emphasis on data analysis at the classroom level to identify and respond to academic gaps.
- Continuing to focus on providing our students with access to grade-level content while using data to identify where gaps exist in order to provide “just-in-time” support.

#### Strengthened Academic Intervention

- New Director of Literacy: Two Rivers will welcome Ms. Caroline, long-time principal of 4th St. Elementary School, into a new role as Director of Literacy focused on strengthening literacy instruction.
- Formalizing teacher fellows program starting with grades 4 and 5 to strengthen our pipeline for lead teaching, including to staff any new small crews required to meet social distancing guidelines.
- Departmentalizing 4th and 5th grade in order to allow teachers to specialize in fewer content areas and provide deeper instruction to students.

We are thrilled to welcome *Ms. Caroline* into her new role as *Director of Literacy!*

What is the most interesting fact that you have learned from our spider expedition so far? Why?



The most interesting fact that I have learned from our spider expedition so far is that spiders use many different ways to catch

Spring 2021 1st Grade Expedition Draft: Sashi



# 4TH STREET

Two Rivers students at our 4th St. Campus will be 100% in person, five day each week. By adjusting our crew sizes and creating more classroom spaces, our students will experience the full schedule and program we are known for: Crews where every student feels known and has a sense of belonging, challenging instructional content, enriching learning expeditions, the arts, Spanish, and physical education, all within our joyous school buildings.

## CREWS & SPACE

The 4th St. Campus now includes the Lower School (1227 4th St.), which is home to preschool to 3rd grade, and the Upper School (1234 4th St.), which is home to 4th and 5th grade. In School Year 2021-22, we are particularly excited to welcome elementary school students into our former middle school space because of the **increased access to the gym and the opening of a new 2,600 sq. ft. rooftop playspace designed with Two Rivers students**. Students and architects reimagined the space to include a climbing wall, quiet arts and crafts meeting area, and an active zone for either basketball or soccer. The space will open in early fall. The Lower School building also includes a **new health suite staffed by a school nurse**.

To support 3ft of distance between students and staff at the 4th St. Campus, crews will be made smaller in kindergarten and grades 2-5, which are typically held in classrooms that cannot hold a full crew with 3 ft of distance in place.

To ensure we still serve all of our students onsite, every day, we will add new crews in these grades. Where we have three crews in grades that previously were two crews, we will split them in a manner that will ensure students will be with many of their peers from their previous crew.

By decreasing crew size, increasing the number of crews, and increasing classrooms, 4th St. will not only meet the recommended 3 ft of distance, but will actually have the space to expand to 6 ft in the event there is a resurgence of community spread. For grades and rooms where crew sizes are not smaller this year, we have identified several lunch options and back up plans in the event that we need to return to 6 ft of distance. These include using spaces like the green or gym for small lunch rotations and other minimally disruptive options.

GRADE	TYPICAL YEAR CREW SIZE	SY21-21 CREW SIZE
PS3	16 - 3 classes	Stays the same
PK4	24 - 2 classes	Stays the same
K	25 - 2 classes	16-17 - 3 classes
1	25 - 2 classes	Stays the same
2	25 - 2 classes	15-18 - 3 classes
3	25 - 2 classes	15-18 - 3 classes
4	25 - 2 classes	15-20 - 3 classes
5	25 - 2 classes	15-20 - 3 classes

## STAFFING

### NEW STAFF

**Academic School Counselor:** Will lead the school counseling program to help students build academic competencies, develop life skills and guide social skills. They will also provide individual and group counseling to build students' social-emotional skills, including problem-solving and self-regulation skills.

**Assistant Principal of Culture:** Will drive the school-wide vision for a positive, values-driven culture including by supporting planning for crew time and ensuring that all adults and students in the school building uphold the Two Rivers culture vision.

**Campus Director of Special Education:** Will monitor academic quality, evaluate academic achievement, support teachers' professional development, and implement high standards for student individual education plan (IEP) growth, ensuring that all students receiving special education services and Section 504 accommodations receive comprehensive and equitable services.

**New Lead Teachers** (3) to meet distancing requirements within our classroom spaces.

### DEPARTMENTALIZATION IN 4TH AND 5TH GRADES

To better insure mastery of skills and knowledge for all students, Two Rivers will departmentalize our 4th and 5th grade teachers. That means that in each grade, there will be one teacher primarily responsible for teaching mathematics and one teacher primarily responsible for teaching English language arts (ELA). Every student will be assigned one teacher as their crew leader and homeroom teacher; however, teachers will rotate to crews of students to teach mathematics and ELA.

### NEW TEACHER FELLOWS PROGRAM

In conjunction with the Two Rivers Learning Institute, we are launching the Two Rivers Teacher Fellows Program. The program will be an opportunity for current assistant teachers to work towards becoming highly-qualified lead teachers through teaching small groups of students in 4th and 5th grades, participating in a two-year professional development cycle, and receiving tuition assistance towards their undergraduate or graduate degree.

### LOOPS

To support the recovery of grade level content and accelerate growth, 4th St. will pause looping with lead teachers in grades 3 and 5. We are, however, seeking at least one staff member from the previous grade to loop. In 3rd grade, two special education teachers will move up with the grade.

## SCHEDULE

School will start at 8:15am and end at 3:15pm on Monday, Tuesday, Thursday and Friday. On Wednesdays, school will start at 8:15 and end at 1:15pm to provide staff with time for planning and professional development as in years past. With multiple entrances and a modest number of students arriving each day, we do not anticipate using staggered start times. Every day, students will have a minimum of one hour of mathematics, one hour of ELA, and one hour of expedition, which includes integrated literacy, social studies, and science.

## CONTACTS

### Principal

Ms. Caroline: [cbaker@tworiverspcs.org](mailto:cbaker@tworiverspcs.org)

### Administrative Assistant to the Principal

Ms. Mishael: [mWashington@tworiverspcs.org](mailto:mWashington@tworiverspcs.org)



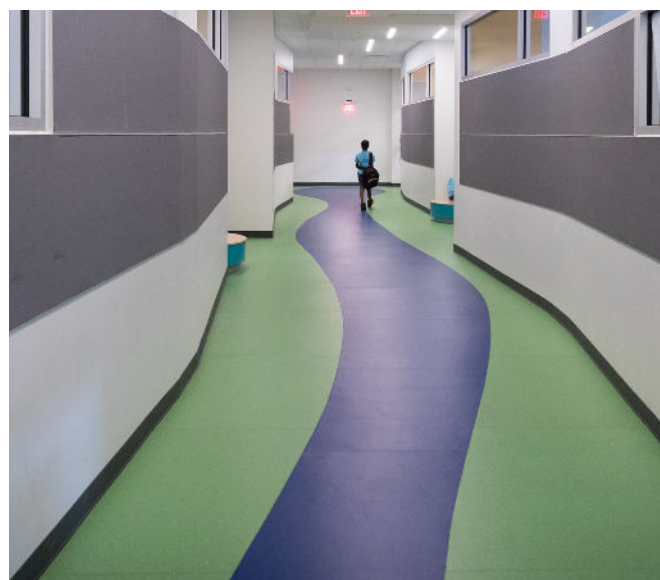


# YOUNG ELEMENTARY

Two Rivers students at Young Elementary will be 100% in person, five day per week. Large classrooms and additional spaces for learning that can be tapped if needed mean that our students will experience the schedule and program we are known for: Crews where every student feels known and has a sense of belongs, challenging instructional content, enriching learning expeditions, the arts, Spanish, and physical education, all within our joyous school buildings.

## CREWS & SPACE

Large classrooms at Young Elementary School mean that students can maintain 3 ft of social distance while learning in thier in traditional classrooms and crew sizes. In the event that there is a resurgence of community spread and 6 ft of space is recommended, we also have contingency plans in place to allow us to nimblely use additional spaces in our buildings and scheduling and staffing to support rotations in smaller groups within each crew. Similarly, we are prepared to hold lunch in spaces like the green, specials rooms, or other spaces in the event that is needed.



## STAFFING

### NEW STAFF

**Academic School Counselor:** Will lead the school counseling program to help students build academic competencies, develop life skills and guide social skills. They will also provide individual and group counseling to build students' social-emotional skills, including problem-solving and self-regulation skills.

**Assistant Principal of Culture:** Will drive the school-wide vision for a positive, values-driven culture including by supporting planning for crew time and ensuring that all adults and students in the school building uphold the Two Rivers culture vision.

**Campus Director of Special Education:** Will monitor academic quality, evaluate academic achievement, support teachers' professional development, and implement high standards for student individual education plan (IEP) growth, ensuring that all students receiving special education services and Section 504 accommodations receive comprehensive and equitable services.

### DEPARTMENTALIZATION IN 4TH AND 5TH GRADES

To better insure mastery of skills and knowledge for all students, Two Rivers will departmentalize our 4th and 5th grade teachers. There will be one teacher primarily responsible for teaching mathematics and one teacher primarily responsible for teaching English language arts (ELA). Every student will be assigned a teacher as their crew leader and homeroom teacher; teachers will rotate to crews of students to teach mathematics and ELA.

### NEW TEACHER FELLOWS PROGRAM

In conjunction with the Two Rivers Learning Institute, we are launching the Two Rivers Teacher Fellows Program. The program will be an opportunity for current assistant teachers to work towards becoming highly-qualified lead teachers through teaching small groups of students in 4th and 5th grades, participating in a two-year professional development cycle, and receiving tuition assistance towards their undergraduate or graduate degree.

### LOOPS

To support the recovery of grade level content and accelerate growth, Young will pause looping in grades K and 2. In both cases, students in the crew will remain together, but lead teachers will not loop up with students. When possible, the assistant teacher will move into the next grade with students. Preschool, PK4, and 5 are non-looping and grades 1 and 3 just completed a loop and will not start a new one. Students in grade 4 will loop as planned with returning teachers.

## SCHEDULE

School will start at 8:15am and end at 3:15pm on Monday, Tuesday, Thursday and Friday. On Wednesdays, school will start at 8:15 and end at 1:15pm to provide staff time for planning and professional development as in years past. With multiple entrances and a modest number of students arriving each day, we do not anticipate using staggered start times. Every day, students will have a minimum of one hour of mathematics, one hour of ELA, and one hour of expedition, which includes integrated literacy, social studies, and science.

## CONTACTS

### Principal

Ms. Chelsie: [cjones@tworiverspcs.org](mailto:cjones@tworiverspcs.org)

### Administrative Assistant to the Principal

Ms. Re'Jeanne: [rejohnson@tworiverspcs.org](mailto:rejohnson@tworiverspcs.org)





# MIDDLE SCHOOL

Two Rivers Middle School students will be 100% in-person, five days per week. Middle School's large classrooms (and the fact that we still have a year before we reach full capacity!) mean we can accommodate all students in each crew even with social distancing restrictions.

## CREWS & SPACE

Large classrooms at the Middle School mean that students can maintain 3ft or 6 ft of social distance while learning in their traditional classrooms and crew sizes. Middle school students will transition classes as normal, unless community spread increases.

## SCHEDULE

School will start at 8:15am and end at 4:15pm on Monday, Tuesday, Thursday and Friday. On Wednesdays, school will start at 8:15 and end at 1:15pm to provide staff time for planning and professional development. This will replace previous Wellness Wednesdays.

With multiple entrances and a modest number of students arriving each day, we do not anticipate using staggered start times. Every day, students will have a minimum of one hour of mathematics, one hour of ELA, and one hour of expedition, which includes integrated literacy, social studies, and science. Students will also continue to have crew, arts electives, spanish, and PE in their schedule as they did pre-pandemic.

## STAFFING

### NEW STAFF

**Academic School Counselor:** Will lead the school counseling program to help students build academic competencies, develop life skills and guide social skills. They will also provide individual and group counseling to build students' social-emotional skills, including problem-solving and self-regulation skills.

**Campus Director of Special Education:** Will monitor academic quality, evaluate academic achievement, support teachers' professional development, and implement high standards for student individual education plan (IEP) growth, ensuring that all students receiving special education services and Section 504 accommodations receive comprehensive and equitable services.

**Additional Spanish teacher and Physical Education teacher**

## CONTACTS

### Principal

Ms. Muronji: [minman@tworiverspcs.org](mailto:minman@tworiverspcs.org)

### Administrative Assistant to the Principal

Ms. Demetrea: [djoyner@tworiverspcs.org](mailto:djoyner@tworiverspcs.org)

### Assistant Principal of Instruction

Mr. Hakim: [hjohnson@tworiverspcs.org](mailto:hjohnson@tworiverspcs.org)

### Assistant Principal of Culture

Mr. Mark : [mnash@tworiverspcs.org](mailto:mnash@tworiverspcs.org)

# SPECIAL EDUCATION

Two Rivers stands committed to fully serving our students with disabilities. We understand that virtual learning has impacted students and families differently. Upon the return to school in the fall, Two Rivers will consider the impact of remote learning, extended school year programming, and the summer break on students' growth. In collaboration with families, staff will use student data to determine any necessary adjustments to students' individual education plans. Teams will engage in this work proactively, ahead of the annual Individualized Education Plan (IEP) meetings, to anticipate student needs.

Our commitment to special education also extends to increased student support and instructional staffing and expanded special education leadership across our campuses. Each school will have a special education instructional leader. Across the network, we have added four additional special education teachers to support co-teaching practices and specialized pull-out services. In addition, we have added an additional speech and language pathologist to support the provision of related services across Young and Middle School.

## *Key Special Education Investments:*

- Special education instructional leader at each campus
- Four additional special education teachers
- Additional speech and language pathologist

Related service providers will deliver all therapy sessions in person, including speech, occupational therapy, physical therapy, audiology, and counseling. Students will receive, at a minimum, the service hours that are outlined in their IEP. Any additional provision of related services will be determined on an individual student basis. IEP teams will take into account the impact of service hours during remote learning, along with student progress toward IEP goals. If a student with an IEP is required to quarantine, families can expect that related services will be offered remotely.



We will also be able to accommodate students with disabilities that impact their ability to consistently wear a mask for extended periods of time, or necessitate adults to wear a specialized mask so that lips can be read or other critical movements of the mouth are visible, such as during speech therapy or when staff are interacting with students who are deaf or hard of hearing.

# SPECIALS

In School Year 2021-22, Two Rivers is thrilled to return to offering our full suite of specials instruction in person. Our specials include Spanish, physical education, visual arts, drama, and music. Over the course of the year, students will be able to return to participating in all of these classes as they have in the past, which will include weekly Spanish and PE classes in all of our schools. In addition, students will have as much time in visual arts, drama, and music as they had pre-pandemic. In the elementary schools, this includes a semester of drama and a semester of visual arts, and a weekly music class. In the middle school students will have regular Spanish and PE courses and an arts block several times a week.



# EXTRACURRICULARS & AFTERCARE

In School Year 2021-22, Two Rivers will continue its partnership with AlphaBEST Education to provide before and aftercare services to our students. As in the past, we anticipate before care will start at 7:15am and end at 8:15am. Aftercare will start at 3:15pm and end at 6:00pm. Additional hours of aftercare will be provided on Wednesdays when students have early dismissal. This partnership was new prior to the pandemic and we continue to assess whether the organization is a fit for Two Rivers based on staff and family feedback. Families can expect to receive materials for signing up for before and aftercare this summer.





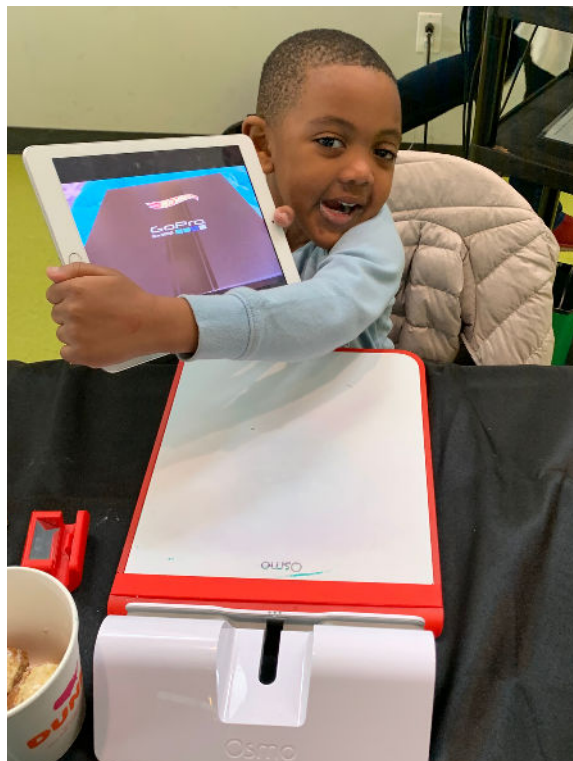
# REMOTE LEARNING

## Device for Home-Use

To ensure we can support students who may need a home device, Two Rivers families will complete a new technology agreement. Once the technology agreement is on file, we will know which students will need access to devices in the event they have to engage in remote learning. In such a circumstance, the school will notify families that a device is available to be picked up for their child. Students in grades 4 through 8 can be given parental permission to take their devices home independently.

## Internet Access

For internet connectivity support, families should utilize the District's resources for low to no-cost internet access. The Two Rivers team is prepared to help families access those resources.



## Simulcast Instruction

After piloting in School Year 2021-21, Two Rivers invested in Swivl projector robots, which allow teachers to provide live instruction simultaneously to remote and in-person students. We are currently determining how this tool may help us to serve students who seek a medical certification to learn remotely next year.

## Medical Exemptions

Mayor Bowser has [required](#) all students to learn in person next school year unless they have a medical need to learn remotely due to the COVID-19 pandemic. As a result, Two Rivers will only offer remote learning for students who have a medical need certified by their pediatrician or doctor. The Office of the State Superintendent for Education (OSSE) has defined medical need to mean: "A student's physical or mental health condition that requires the student to participate in distance learning due to coronavirus (COVID-19)." An official form to be completed by you and your child's doctor is forthcoming. You can reach out to Iasia Brown, TR's Student Administration Manager, with any questions about the certification process at [ibrown@tworiverspcs.org](mailto:ibrown@tworiverspcs.org).